

MOBILHOMES DESCRIPTIONS

From 24m² to 34m²

NO-CLIMATE RANGES

Stay in 7 nights in high season and from 2 nights in low season

All our mobile homes are equipped with a covered terrace and a television

FAMILIAL « EMERALD » - 24m² - 4 persons

the +++: its layout

2 Bedrooms – One room with a double bed of 140cm and one room with twin beds of 80cm.

Kitchen - Refrigerator + Freezer, equipped kitchen, microwave and kitchen kit.

Stay - Bench, table and chairs.

Bathroom - Shower + sink. Separated toilets.

Outside – Outside terrace of 20m² with garden furniture's and eating space



Locations : 213 / 412 / 617 / 619 / 626 / 632 / 634 / 677 / 684

COMFORT « GARNET » - 24m² - 5 persons

the +++: its reception capacity

2 Bedrooms – One room with a double bed of 140cm and one room with twin beds of 80cm.

Kitchen - Refrigerator of 230L + Freezer, equipped kitchen, microwave and kitchen kit.

Stay - Bench, table and chairs.

Bathroom - Shower + sink. Separated toilets.

Outside – Outside covered terrace of 20m² with garden furniture's and eating space



Locations : 611 / 612 / 635 / 651 / 653 / 655 / 686 / 687

GREAT COMFORT « RUBY » - 28m² - 5 persons

the +++: its surface of 28m²

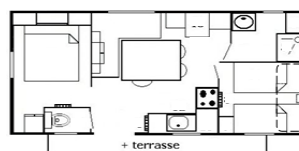
2 Bedrooms – One room with a double bed of 140cm and one room with twin beds of 80cm and an elevated bed of 80cm.

Kitchen – Refrigerator of 230L + Freezer, equipped kitchen, microwave and kitchen kit.

Stay - Bench, table and chairs.

Bathroom - Shower + sink. Separated toilet

Outside – Outside terrace of 20m² with garden furniture and eating space.



Locations : 410 / 526 / 527

INVENTORY (common EMERALD, GARNET, RUBY and DIAMOND)

| | | | |
|-------------------------|-----------------|--------------------------------|--------------------------------|
| 1 Table | 1 Salad spinner | 6 Dessert plates | 6 bowls |
| 2 Chairs | 1 Carafe | 6 Goblets | 1 Bread knife |
| 1 Fridge | 1 Table mat | 6 Forks | 1 Cutting board |
| 1 Micro-waves | 1 Can opener | 6 Spoons | 1 Saver |
| 1 Electric coffee maker | 1 Corkscrew | 6 Knives | 1 Bucket and a bowl |
| 2 Stoves | 1 Spatula | 6 Teaspoons | 1 Broom and shovel |
| 2 Pans and 2 lids | 1 Ladle | 1 Carving knife | 1 Broom, broom brush and a mop |
| 2 dishes | 1 Skimmer | 1 Salad bowl and salad servers | 1 Ashtray |
| 1 Saucepan | 6 Soup plates | 6 Glasses | Hangers |
| 1 Colander | 6 plates | 6 Cups | |

For any information : (0033) 4.68.80.48.10.

EMail : camping@lesaintemarie.com / Site : www.campinglesaintemarie.com

* Non-contractual locations

CLIMATE RANGES



Stay in 7 nights in high season AND from 2 nights in low season

All our mobile homes are equipped with a covered terrace and a television

LUXE « DIAMOND » - 28m² - 5 persons - TV

The +++: its air conditioning and television

2 Bedrooms – One room with a double bed of 140cm and one room with twin beds of 80cm and an elevated bed of 80cm.

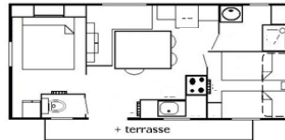
Kitchen – Refrigerator of 230L + Freezer, equipped kitchen, microwave and kitchen kit.

Stay - Bench, table and chairs.

Bathroom - Shower + sink. Separated toilets.

Outside – Outside terrace of 20m² with garden furniture and eating space.

Locations : 113 / 201 / 525 / 528 / 530 / 742 / 762



PREMIUM « GOLD » - 32m² - 7 Persons – SALON TV

The +++: its air conditioning and television, its seating area

2 Bedroomss - One bedroom with a 140cm bed, one bedroom with two 80cm twin beds and an 80cm high bed

and modular living room in a separate bedroom

The bedrooms are fitted with mosquito nets.

Kitchen - Refrigerator of 230L + Freezer, equipped kitchen, microwave and kitchen kit.

Stay - Bench, table, chairs, reversible air conditioning

Bathroom - Shower + sink. Separate WC.

Outside - 20m² covered outdoor terrace with dining area and garden set

Emplacements : 688 / 689 / 733



EXCELLENCY « PLATINUM » - 34m² - 7 Persons – SALON TV

The +++: three bedrooms, covered terrace, air conditioning and television, modern kitchen, indoor and outdoor seating area

3 Bedrooms - A bedroom with a 140cm bed, a bedroom with two twin beds of 80cm, a bedroom with 1 pull-out bed and a loft bed

Kitchen - 230L fridge freezer, equipped kitchen, microwave and dishwasher.

Living room - table, chairs, separate lounge area reversible air conditioning

Shower room - Italian shower + washbasin. Separate WC.

Outside - Covered outdoor terrace of 24m² with bench space and garden set

Locations : 103 / 106 / 108 109 / 111 / 112 / 118 / 681 / 761 / 773 / 774



INVENTORY (common EMERALD, GARNET, RUBY and DIAMOND)

| | | | |
|-------------------------|-----------------|--------------------------------|--------------------------------|
| 1 Table + bench | 1 Salad spinner | 12 Dessert plates | 12 bowls |
| 2 PVC Chairs | 1 Carafe | 12 Goblets | 1 Bread knife |
| 1 Fridge | 1 Table mat | 18 Forks | 1 Cutting board |
| 1 Micro-waves | 1 Can opener | 18 Spoons | 1 Saver |
| 1 Electric coffee maker | 1 Corkscrew | 18 Knives | 1 Bucket and a bowl |
| 2 Stoves | 1 Spatula | 18 Teaspoons | 1 Broom and shovel |
| 2 Pans and 2 lids | 1 Ladle | 1 Carving knife | 1 Broom, broom brush and a mop |
| 2 dishes | 1 Skimmer | 2 Salad bowl and salad servers | 1 Ashtray |
| 1 Saucepan | 12 Soup plates | 12 Glasses and wine glasses | Hangers |
| 1 Colander | 18 Plates | 06 Cups | |

Cleaning fee 100 euros

For any information : (0033) 4.68.80.48.10.

Email : camping@lesaintemarie.com / Site : www.campinglesaintemarie.com

* Non-contractual locations